

S E G U I I L T U O

---

# ISTINTO

GIORGIO GRAESAN  
and Friends

Questa è la copia N°.....  
di una serie di 3000 ed è riservata al  
Signor

.....

in quanto PIONIERE di Segui il Tuo **ISTINTO**.

Il Rivenditore

.....

CALCE E PIETRA...  
solo natura

5 anno

# CALCE, POLVERI DI MARMO E MINERALI, SOLO **NATURA**

Calce, polveri di Marmo di diverse dimensioni e Minerali Naturali compongono Segui il Tuo **ISTINTO**. Cera d'Api e saponi compongono la Cera del Vecchio. Gioia è una finitura acrilica.

Segui il Tuo **ISTINTO** contains Lime, Marble powders of various sizes and Natural Minerals. Cera del Vecchio contains Beeswax and soaps. Gioia is an acrylic finishing.

Chaux, poudres de marbre de différentes granulométries et minéraux naturels composent Segui il Tuo **ISTINTO**. Cire d'abeille et savons composent la Cera del Vecchio. Gioia est une finition acrylique.

Sie Bestandteile von Segui il Tuo **ISTINTO** sind Kalk, Marmorpulver in unterschiedlicher Körnung und natürliche Mineralien. Die Bestandteile von Cera del Vecchio sind Bienehonig und Seife. Gioia ist ein Finish auf Acrylbasis.

Cal, polvos de Mármol de distintos tamaños y Minerales Naturales, componen Segui il Tuo **ISTINTO**. Cera de Abeja y jabones, componen la Cera del Vecchio. Gioia es un acabado acrílico.

Ασβέστης, Μαρμαρόσκονη διαφορετικής κοκκομετρικής διαβάθμισης και Φυσικά Ορυκτά συνθέτουν το Segui il Tuo **ISTINTO**. Μελισσοκέρι και σαπούνια αποτελούν το Cera del Vecchio. Το Gioia είναι ένα ακριλικό τελείωμα.

岩采坭原料由石灰岩，理石研磨大小不一颗粒和天然矿石组成。表层专用保护蜡的原料含天然蜂蜡和皂。银采坭是丙烯酸材料，可用于表层润色收尾。

Consumi - Coverage - Consommation - Ergiebigkeit - Consumos - ΑΠΟΔΟΣΗ

Primus Naturale 150/200 gr/mq	Segui il tuo <b>ISTINTO</b> da 1,5 a 2 kg/mq	Cera 20/30 gr/mq	GIOIA-ORO-WHITE PAINT diluizione 30% acqua 150 gr/mq
----------------------------------	---	---------------------	--

S E G U I I L T U O

---

# ISTINTO

GIORGIO GRAESAN  
and Friends

# PIETRA CONTEMPORANEA

---

**Un Muro diversamente liscio per la sensazione di una pietra che ricorda il momento attuale, i suoi colori e le sue bellissime complessità. Naturalmente lucido o meno può' essere protetto e evidenziato con Cera del Vecchio, Vetro lucido o Opaco.**

A differently smooth Wall to get the feeling of a stone that reminds of the current moment, its colors and its wonderful complex patterns. Naturally shiny or matt, it can be protected with the Cera del Vecchio wax for polished and matt glass (Vetro Opaco e Lucido).

Un mur lisse à sa manière, qui procure les sensations d'une pierre rappelant le moment actuel, ses couleurs et ses splendides complexités. Naturellement lisse ou pas, il peut être protégé et mis en valeur par Cera del Vecchio, Vetro Lucido ou Opaco.

Eine vom Eindruck des Steins her ansonsten glatte Wand – ein Stein, der an die Gegenwart erinnert mit seinem Farbspiel und seiner wunderschönen Komplexität. Aufgrund seiner mehr oder weniger glänzenden natürlichen Belassenheit kann er mit den Produkten Cera del Vecchio, Vetro lucido oder Opaco sowohl geschützt als auch auf besondere Weise zum Ausdruck gebracht werden.

Una Muralla lisa pero diferente debido a la sensación de Piedra que recuerda el momento actual, sus colores y sus bellísimas complejidades. Naturalmente brillante o casi, puede protegerse y resaltarse con "Cera del Vecchio", Vidrio Brillante u Opaco.

Ένας Τοίχος διαφορετικά λείος, για μια αίσθηση μιας πέτρας που θυμίζει την περίοδο αυτή, τα χρώματά τις και τις πανέμορφες πολυπλοκότητές τις. Φυσικά γυαλιστερό ή όχι, μπορεί να προστατευτεί και να τονωθεί με Cera del Vecchio, Vetro lucido ή Opaco.

这款石材使墙壁具有独特的光滑感，使人体会到当下的美好时光、颜色及其复杂的美感。使用Cera del Vecchio、Vetro lucido 或Opaco可保护并突出其天然的光泽。

# Pietra Contemporanea





PIETRA CONTEMPORANEA

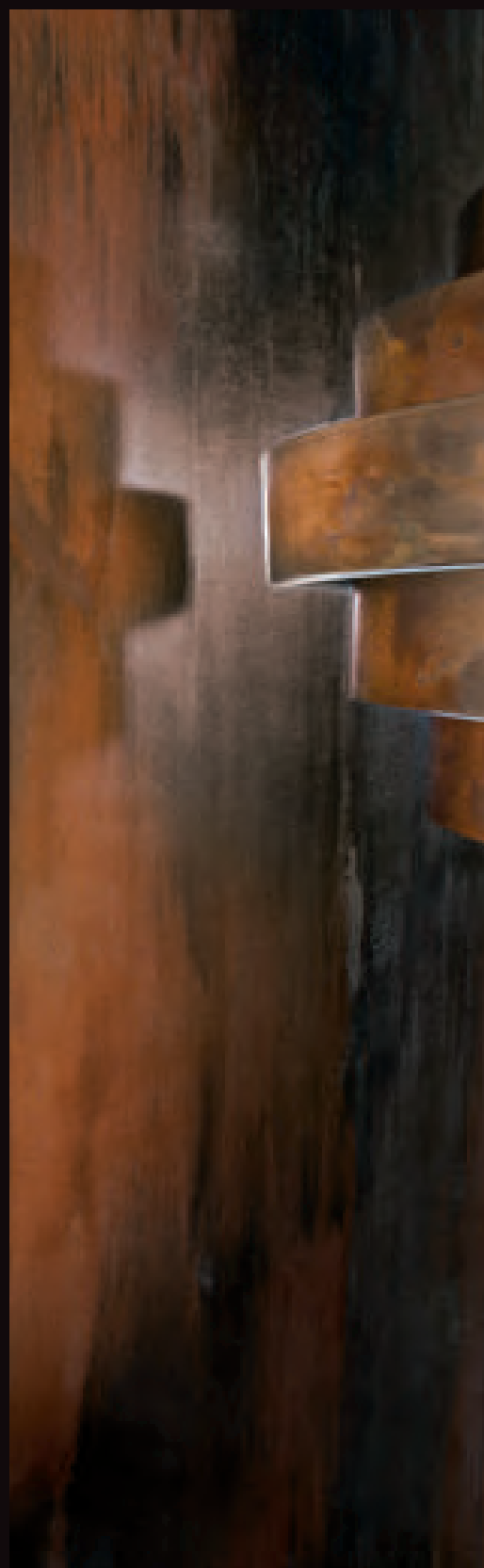
Istinto 1AM

Istinto 1NA

Istinto 1NB

Finiture: Cera o Vetro Lucido o Opaco

[www.giorgiograesan.it/video/19](http://www.giorgiograesan.it/video/19)





PIETRA CONTEMPORANEA

Istinto 1070

Istinto 3GF

Istinto 3GC

Finiture: Cera o Vetro Lucido o Opaco

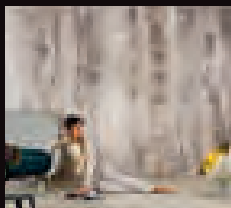
[www.giorgiograesan.it/video/19](http://www.giorgiograesan.it/video/19)





Pag. 8





Pag. 10



# PIETRA SPACCATA

---

**La rappresentazione di una Pietra che viene tagliata esattamente e poi lucidata con in evidenza le sue vene Naturali. Il piacere di caratterizzare il proprio ambiente con un pezzo di Natura.**

The representation of a Stone that is exactly cut and then polished to highlight its natural veins. The pleasure to personalize your place with a slice of Nature.

La représentation d'une pierre taillée dans la précision puis polie pour mettre en valeur ses veines naturelles. Le plaisir d'offrir à une pièce une touche de nature.

Hier wird ein Stein präsentiert, welcher genauestens zugeschnitten und dann poliert wird, um seine natürliche Ädem hervorzuheben – für das angenehme Gefühl, seine Umgebung mit einem Stück Natur zu charakterisieren.

Representa una Piedra cortada exactamente y luego pulida poniendo en evidencia sus vetas naturales. El placer de caracterizar el propio ambiente con un trozo de Naturaleza.

Η παρουσίαση μιας Πέτρας που είναι κομμένη με ακρίβεια και κατόπιν είναι γυαλισμένη τονίζοντας τις φυσικές τις αποχρώσεις. Η ευχαρίστηση να χαρακτηρίσετε το δικό σας περιβάλλον με ένα κομμάτι Φύσης.

这款石材经过精确切割打磨，展示出其天然的纹理。将大自然与居家空间完美融入一体。

An aerial photograph of a mountain range, likely the Alps, showing a prominent central peak and several ridges. The terrain is rugged and covered in dense vegetation, with some rocky outcrops visible. The sky is overcast with soft, grey clouds.

# Pietra Spaccata





PIETRA SPACCATA

Istinto 1070

Gioia 2000

Gioia 4NA

Finiture: Vetro Lucido o Opaco

[www.giorgiograesan.it/video/15](http://www.giorgiograesan.it/video/15)





PIETRA SPACCATA

Istinto 1070

Gioia 2000

Gioia 3NA

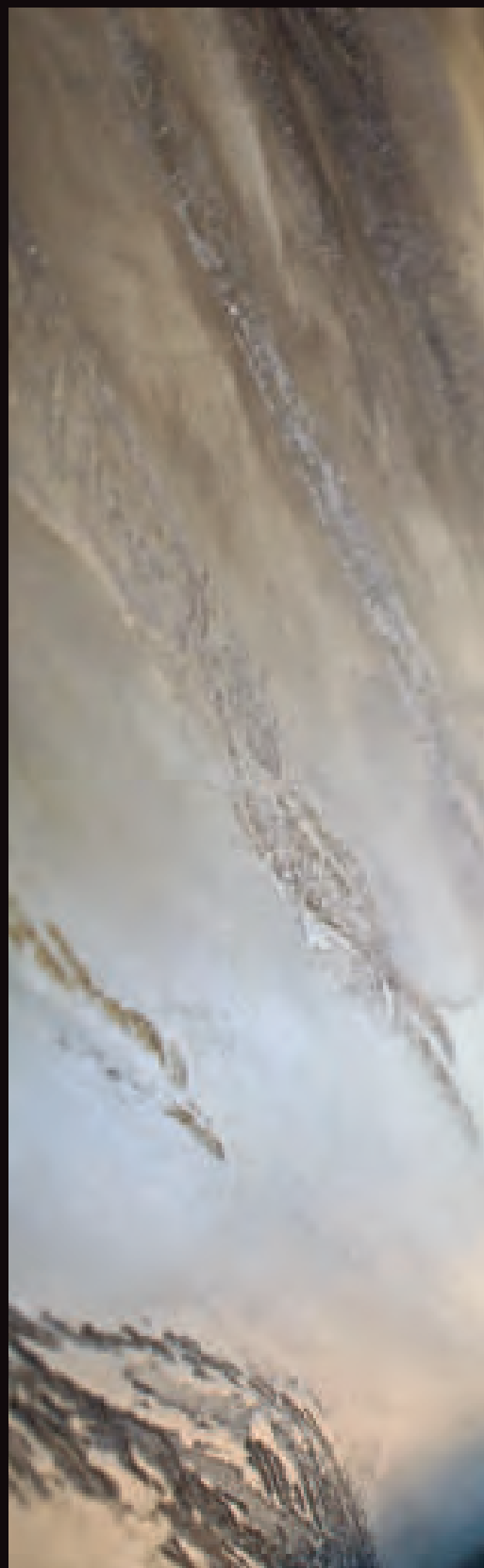
Gioia 2NB

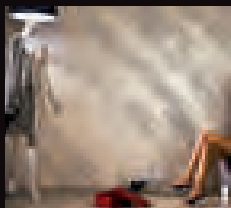
White Paint 2040

Glitter GL

Finiture: Vetro Lucido o Opaco

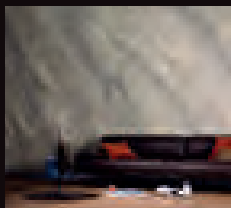
[www.giorgiograesan.it/video/15](http://www.giorgiograesan.it/video/15)



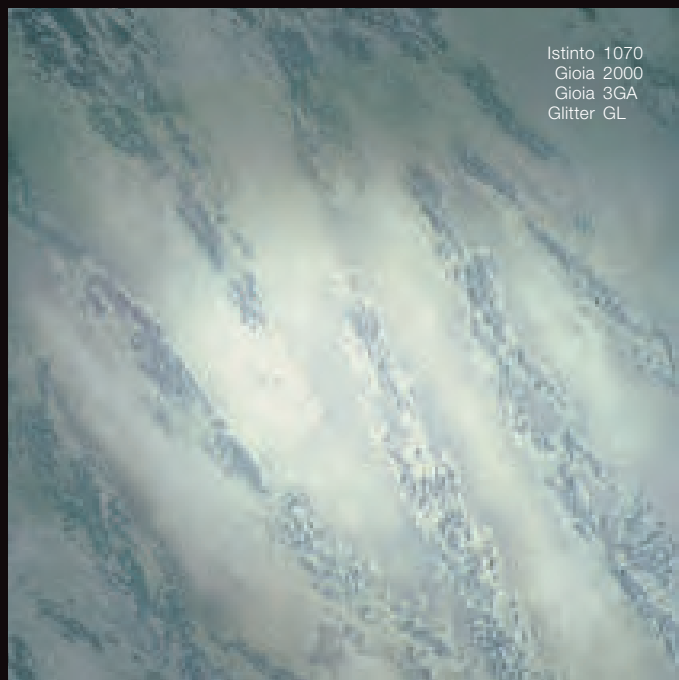


Pag. 16





Pag. 18





PIETRA SPACCATA

Istinto 1070

Gioia 1SC

Gioia 1SC

Oro Ricco 1AA

White Paint 2040

Finiture: Vetro Lucido o Opaco

[www.giorgiograesan.it/video/15](http://www.giorgiograesan.it/video/15)







PIETRA SPACCATA

Istinto 1070  
Gioia 2000  
Oro Ricco 2AM  
Gioia 1SC

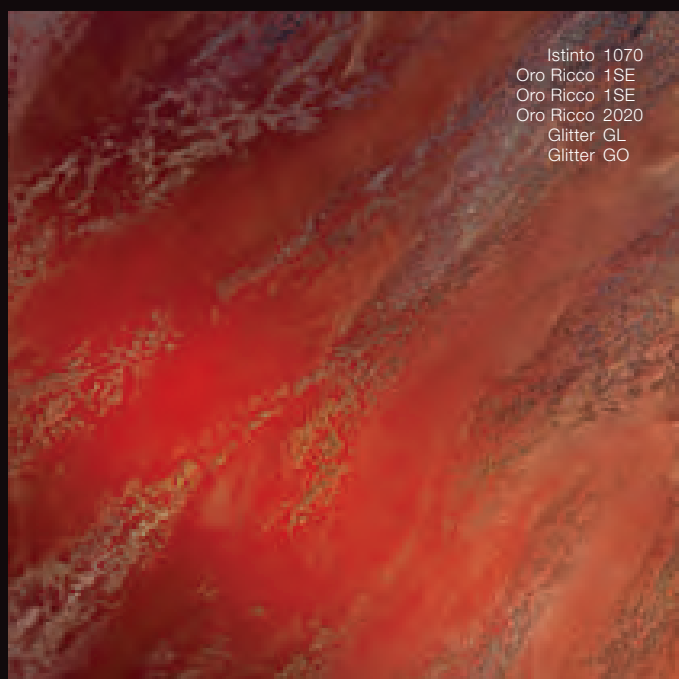
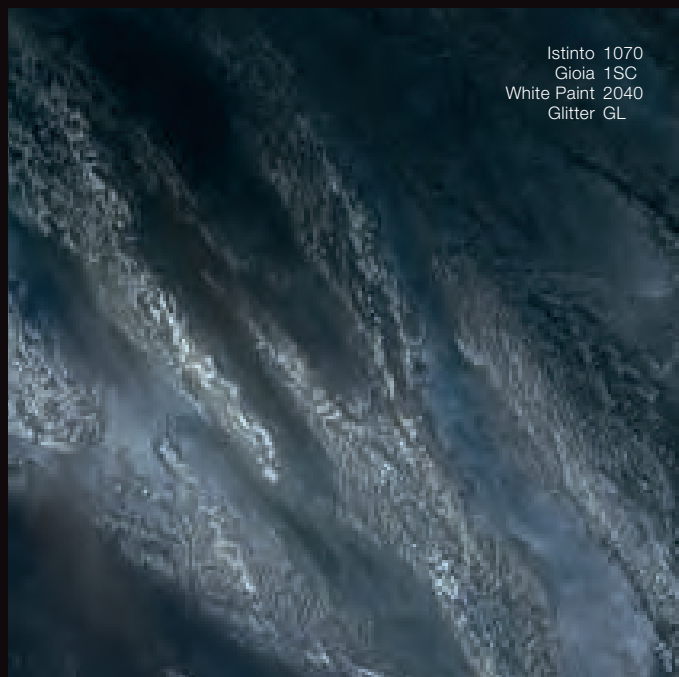
Finiture: Vetro Lucido o Opaco

[www.giorgiograesan.it/video/15](http://www.giorgiograesan.it/video/15)





Pag. 22





Pag. 24



Istinto 1070  
Gioia 2000  
Gioia 3GF  
Gioia 1GD  
Gioia 1GB  
Gioia 1GA  
Gioia 2000



Istinto 1070  
Gioia 2000  
Gioia 3GF  
Gioia 1GC  
Gioia 2000



Istinto 1070  
Gioia 2000  
Gioia 4NA  
Gioia 1SC  
White Paint 2040



Istinto 1070  
Gioia 2000  
Gioia 1GG  
Gioia 1GB  
Gioia 1GE



PIETRA SPACCATA

Istinto 1070

Gioia 3GF

Gioia 3GF

Finiture: Vetro Lucido o Opaco

[www.giorgiograesan.it/video/1](http://www.giorgiograesan.it/video/1)





PIETRA SPACCATA

Istinto 1070

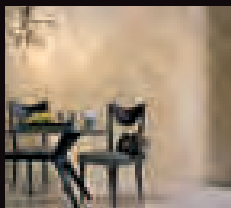
Gioia 2SC

Gioia 2SC

Finiture: Vetro Lucido o Opaco

[www.giorgiograesan.it/video/1](http://www.giorgiograesan.it/video/1)





Pag. 28



Istinto 1070  
Gioia 1GB  
Gioia 1GB



Istinto 1070  
Gioia 2GE  
Gioia 2GE



Istinto 1070  
Gioia 2GG  
Gioia 2GG



Istinto 1070  
Gioia 4GE  
Gioia 4GE





Pag. 30



Istinto 1070  
Gioia 2SB  
Gioia 2SB



Istinto 1070  
Gioia 3NA  
Gioia 3NA



Istinto 1070  
Gioia 4NA  
Gioia 4NA



Istinto 1070  
White Paint 2040  
White Paint 2040

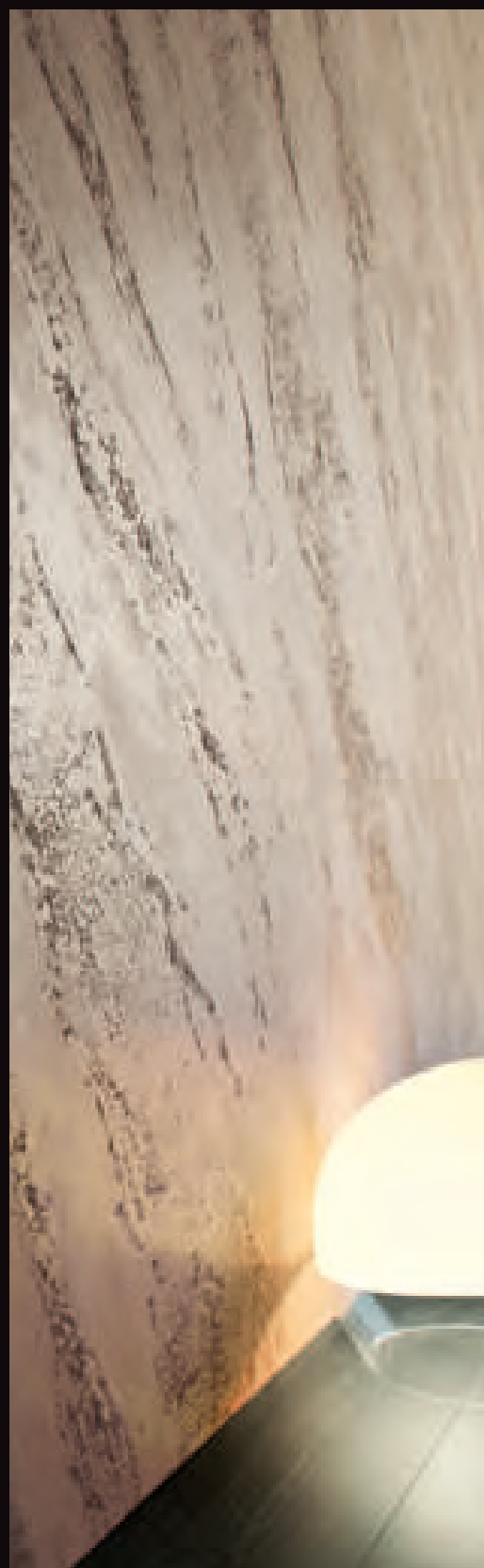


PIETRA SPACCATA

Istinto 2GE

Finiture: Cera del Vecchio

[www.giorgiograesan.it/video/1](http://www.giorgiograesan.it/video/1)



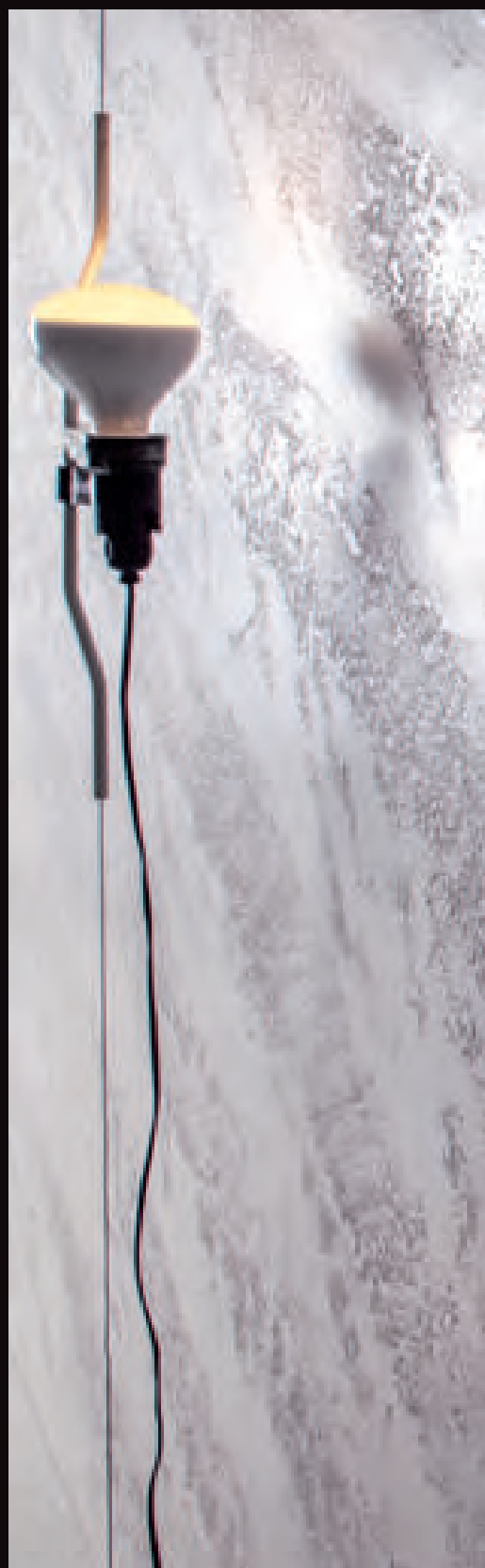


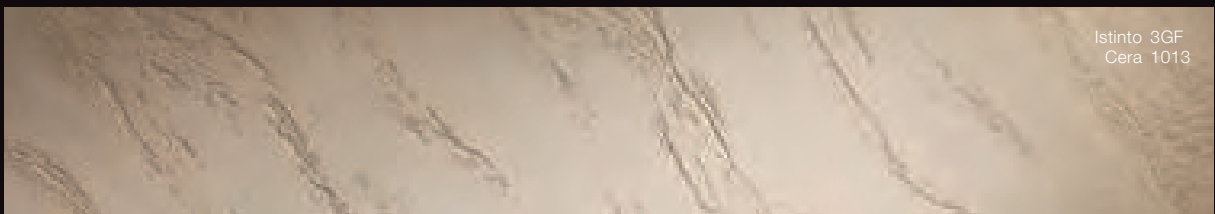
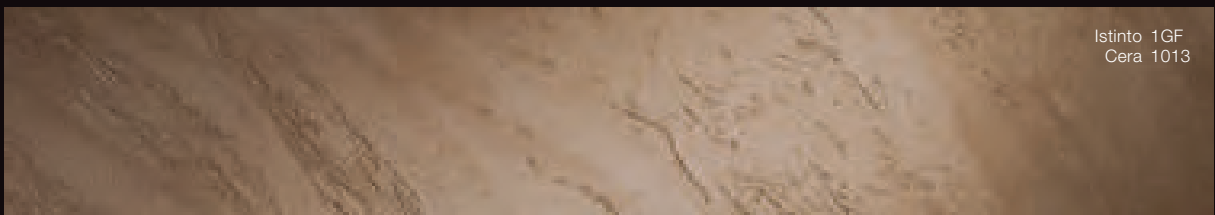
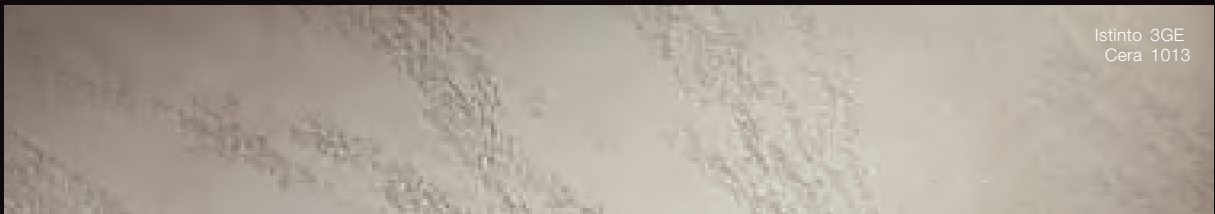
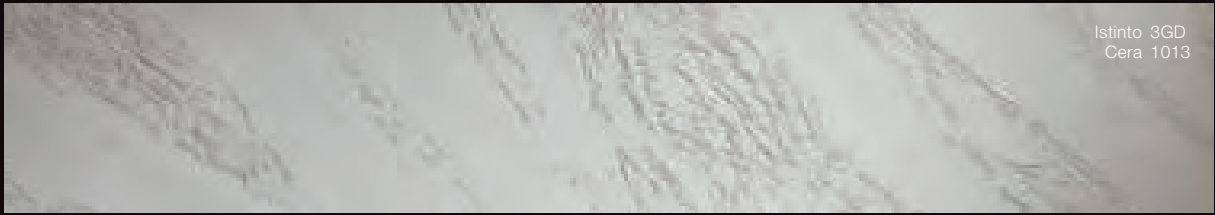
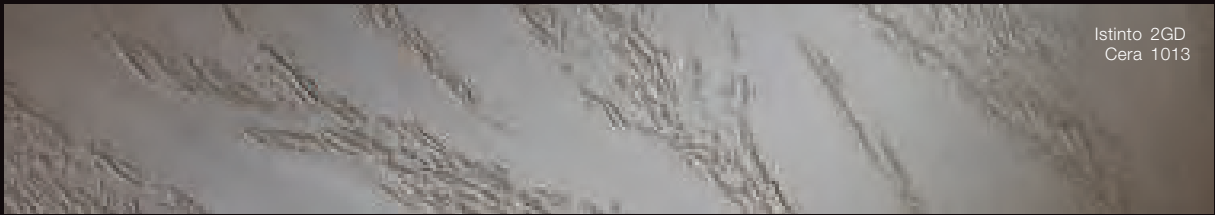
PIETRA SPACCATA

Istinto 1070

Finiture: Cera del Vecchio

[www.giorgiograesan.it/video/1](http://www.giorgiograesan.it/video/1)







## PIETRA SPACCATA VERTICALE

---

**La rappresentazione di una Pietra che viene tagliata esattamente e poi lucidata con in evidenza le sue vene Naturali. Il piacere di caratterizzare il proprio ambiente con un pezzo di Natura.**

The representation of a Stone that is exactly cut and then polished to highlight its natural veins. The pleasure to personalize your place with a slice of Nature.

La représentation d'une pierre taillée dans la précision puis polie pour mettre en valeur ses veines naturelles. Le plaisir d'offrir à une pièce une touche de nature.

Hier wird ein Stein präsentiert, welcher genauestens zugeschnitten und dann poliert wird, um seine natürliche Ädem hervorzuheben – für das angenehme Gefühl, seine Umgebung mit einem Stück Natur zu charakterisieren.

Representa una Piedra cortada exactamente y luego pulida poniendo en evidencia sus vetas naturales. El placer de caracterizar el propio ambiente con un trozo de Naturaleza.

Η παρουσίαση μιας Πέτρας που είναι κομμένη με ακρίβεια και κατόπιν είναι γυαλισμένη τονίζοντας τις φυσικές τις αποχρώσεις. Η ευχαρίστηση να χαρακτηρίσετε το δικό σας περιβάλλον με ένα κομμάτι Φύσης.

这款石材经过精确切割打磨，展示出其天然的纹理。将大自然与居家空间完美融入一体。



# Pietra Spaccata Verticale



PIETRA SPACCATA VERTICALE

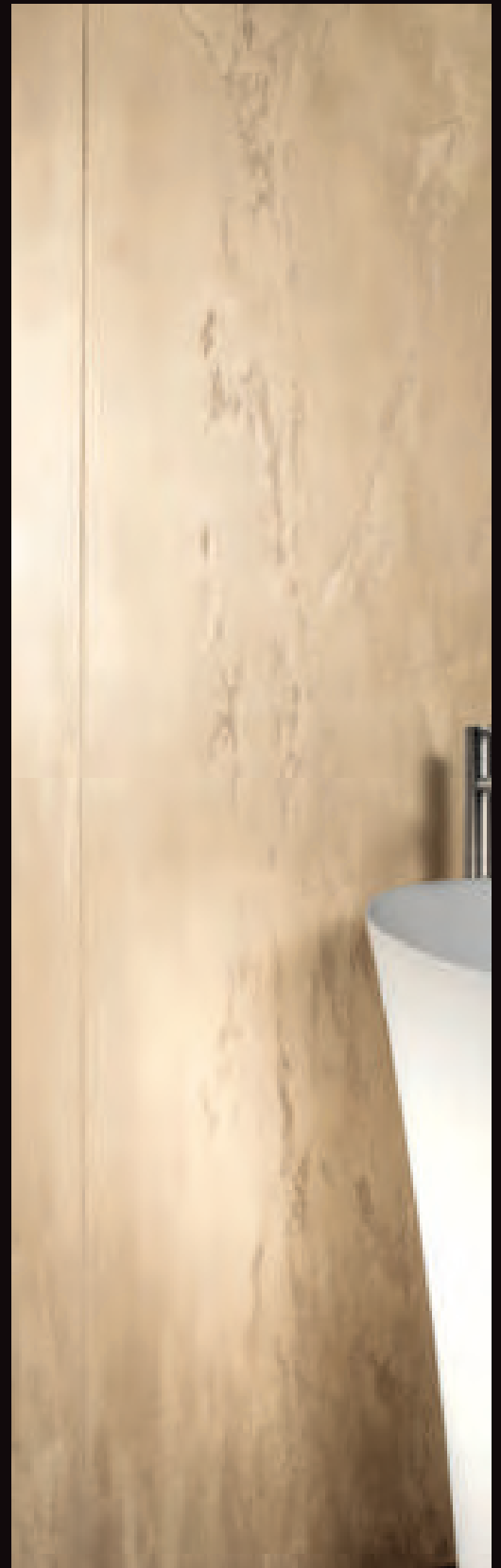
Istinto 1070

Gioia 2000

Gioia 3GF

Finiture: Vetro Lucido o Opaco

[www.giorgiograesan.it/video/20](http://www.giorgiograesan.it/video/20)





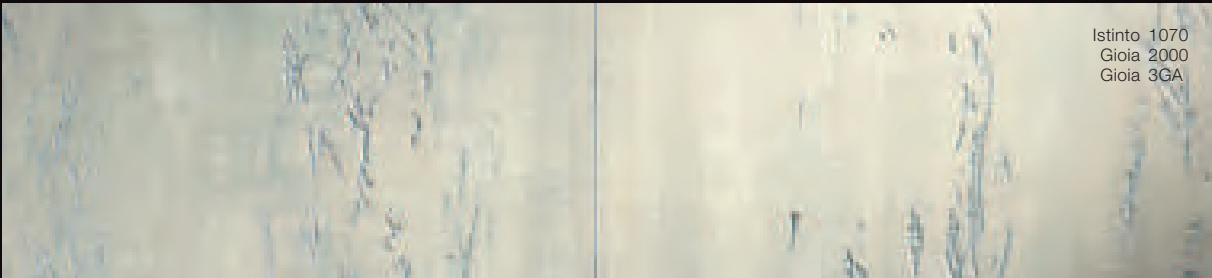
PIETRA SPACCATA VERTICALE

Istinto 1070  
Gioia 3GF  
Gioia 1GF  
Gioia 1NB

Finiture: Vetro Lucido o Opaco

[www.giorgiograesan.it/video/20](http://www.giorgiograesan.it/video/20)





Istinto 1070  
Gioia 2000  
Gioia 3GA



Istinto 1070  
White Paint 2040  
White Paint 2040



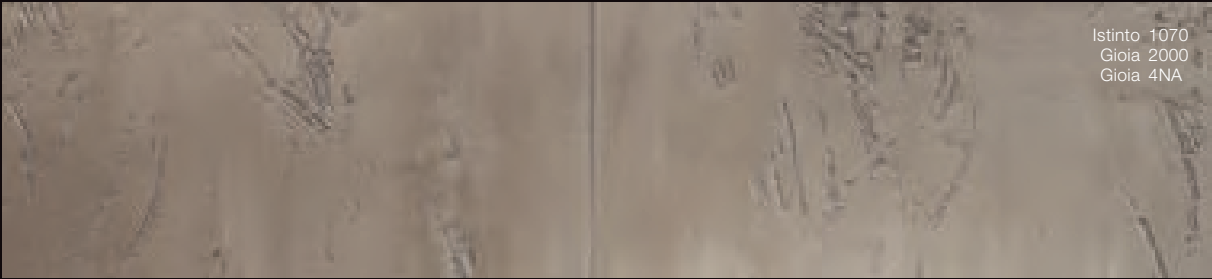
Istinto 1070  
Gioia 2000  
Gioia 3GE



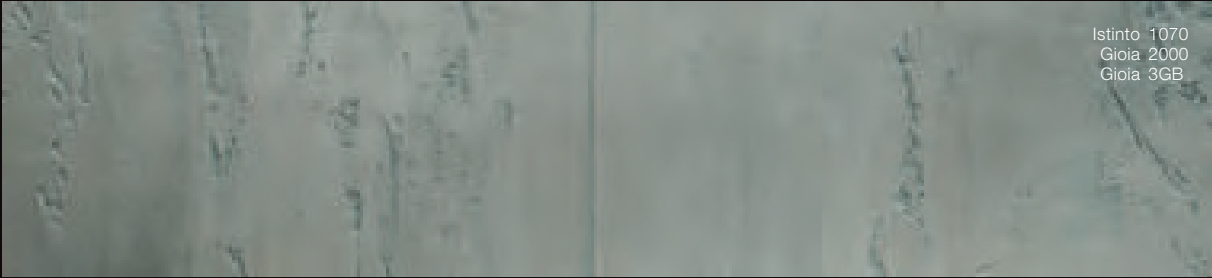
Istinto 1070  
Gioia 2000  
Gioia 4GC



Istinto 1070  
Gioia 2000  
Gioia 3NB



Istinto 1070  
Gioia 2000  
Gioia 4NA



Istinto 1070  
Gioia 2000  
Gioia 3GB



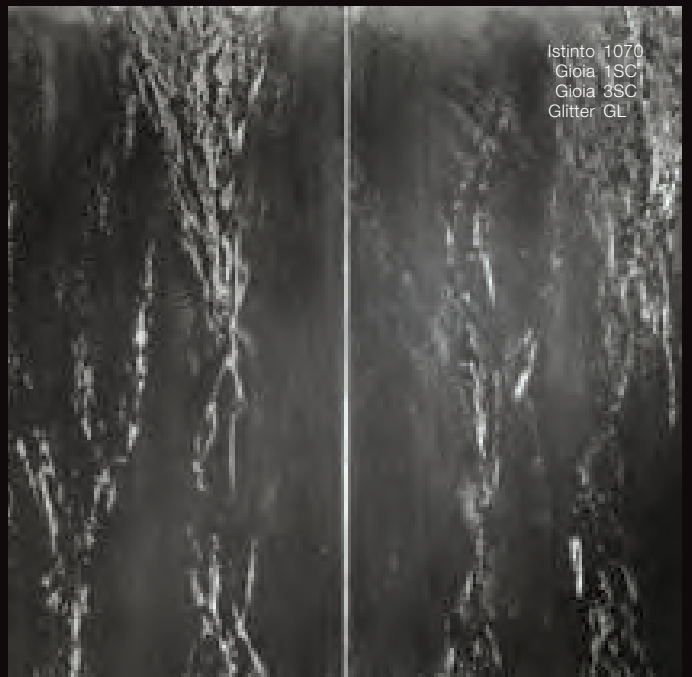
Istinto 1070  
Gioia 3GD  
Gioia 1GD



Istinto 1070  
Gioia 3NB  
Gioia 1NB



Istinto 1070  
Gioia 3GB



Istinto 1070  
Gioia 1SC  
Gioia 3SC  
Glitter GL

# PIETRA ZEN

---

Evoca la tranquillità della cultura Zen con il suo Segno che ci porta lontano nello spazio. Viene disegnata in orizzontale, verticale o obliqua dando diverse esperienze tattili e visive.

It evokes the peacefulness of the Zen culture, with its Sign that takes us far away in space. It is drawn horizontally, vertically or oblique, offering different tactile and visual experiences.

Elle évoque la sérénité de la culture zen, avec son tracé qui nous fait voyager dans l'espace. Les effets sont horizontaux, verticaux ou obliques, ce qui donne différents résultats au toucher et à la vue.

Ein Stein, der an die Stille der Zen-Kultur erinnert – mit seinem Zeichen, welches uns hinwegführt von Raum und Zeit, und mit einer horizontalen, vertikalen oder schrägen Gestaltung für unterschiedliche haptische und visuelle Erfahrungen.

Evoca la tranquilidad de la cultura Zen con su Signo que nos transporta lejos en el espacio. Se dibuja de forma horizontal, vertical u oblicua proporcionando diferentes experiencias táctiles y visuales.

Υπενθυμίζει την ησυχία του πολιτισμού Zen με το Σήμα του που μας πηγαίνει μακριά στο χρονικό διάστημα. Ζωγραφίζεται οριζόντια, κατακόρυφα ή λοξά δίνοντας διαφορετικές απτικές και όπτικές αισθήσεις.

这款石材尽显禅宗文化的极静意境，带领我们进入空灵的氛围。水平、垂直或倾斜涂刷会赋予不同的触觉和视觉体验。



# Pietra Zen



PIETRA ZEN

Istinto 1070  
Gioia 2000  
Gioia 2000

Finiture: Vetro Lucido o Opaco

[www.giorgiograesan.it/video/17](http://www.giorgiograesan.it/video/17)





PIETRA ZEN

Istinto 1070

Gioia 2000

Gioia 2GE

Gioia 2GE

Finiture: Vetro Lucido o Opaco

[www.giorgiograesan.it/video/17](http://www.giorgiograesan.it/video/17)

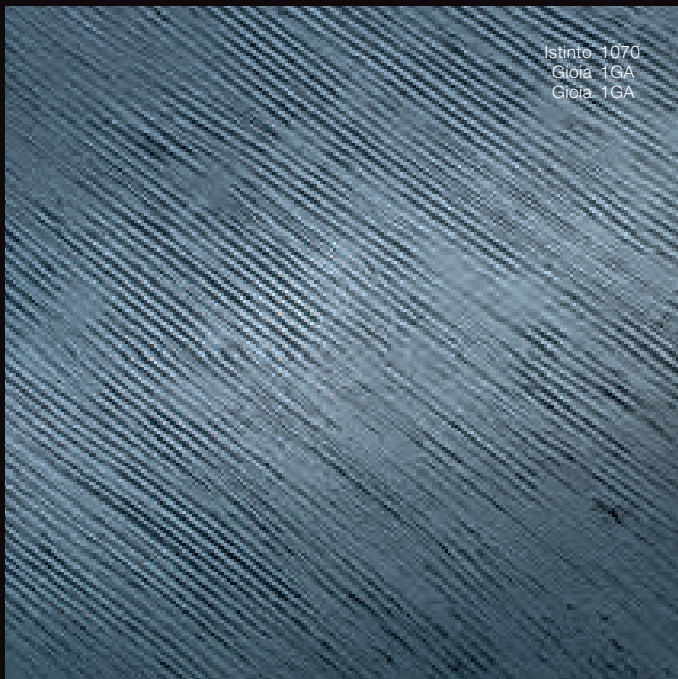




Istinto 1070  
Gioia 3GF  
Gioia 3GF



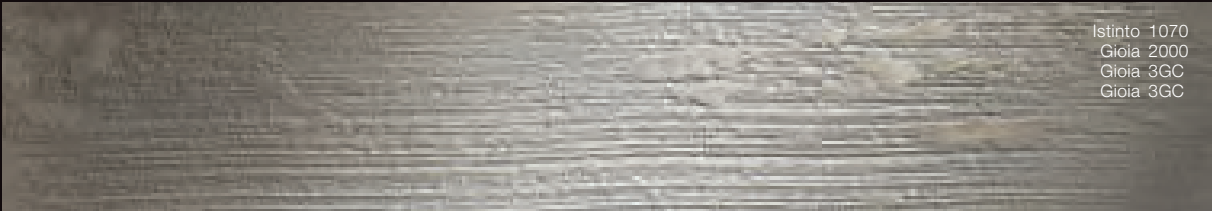
Istinto 1070  
Gioia 3GD  
Gioia 3GD



Istinto 1070  
Gioia 1GA  
Gioia 1GA



Istinto 1070  
Gioia 1NA  
Gioia 1NA



Istinto 1070  
Gioia 2000  
Gioia 3GC  
Gioia 3GC



Istinto 1070  
Gioia 2000  
Gioia 1GD  
Gioia 1GD



Istinto 1070  
Gioia 2000  
Gioia 1GF  
Gioia 1GF



Istinto 1070  
Gioia 2000  
Gioia 2GE  
Gioia 2GE



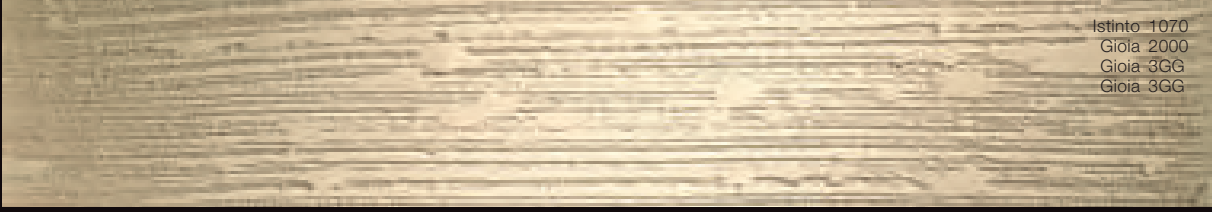
Istinto 1070  
Gioia 2000  
Gioia 4NB  
Gioia 4NB



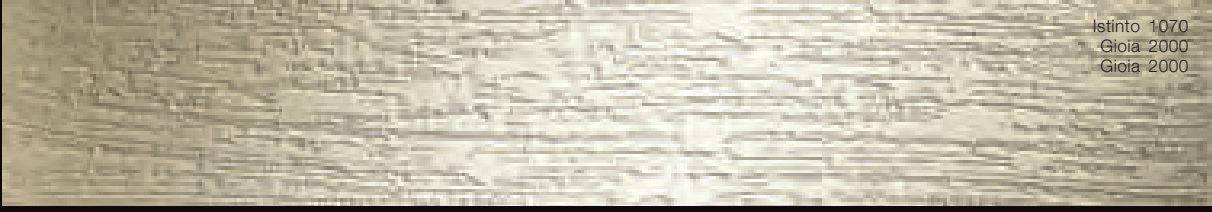
Istinto 1070  
Gioia 2000  
Gioia 3GD  
Gioia 3GD



Istinto 1070  
Gioia 2000  
Gioia 3GF  
Gioia 3GF



Istinto 1070  
Gioia 2000  
Gioia 3GG  
Gioia 3GG



Istinto 1070  
Gioia 2000  
Gioia 2000



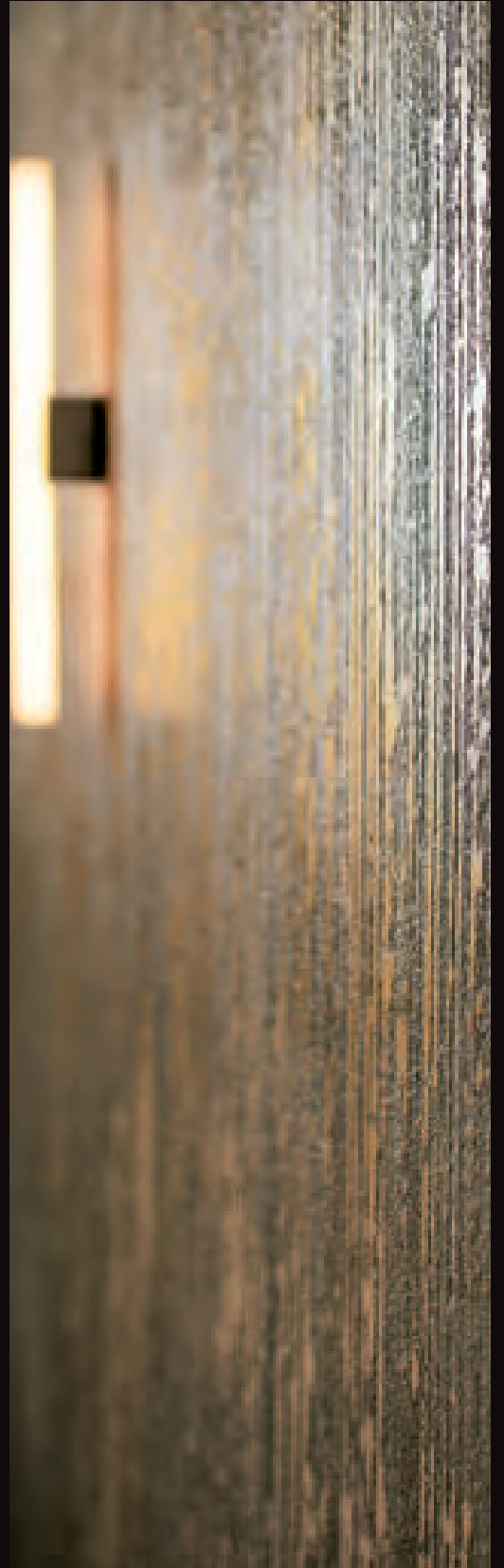


PIETRA ZEN

Istinto 1070  
Oro Ricco 2020  
Gioia 1GD  
Glitter GO

Finiture: Vetro Lucido o Opaco

[www.giorgiograesan.it/video/17](http://www.giorgiograesan.it/video/17)





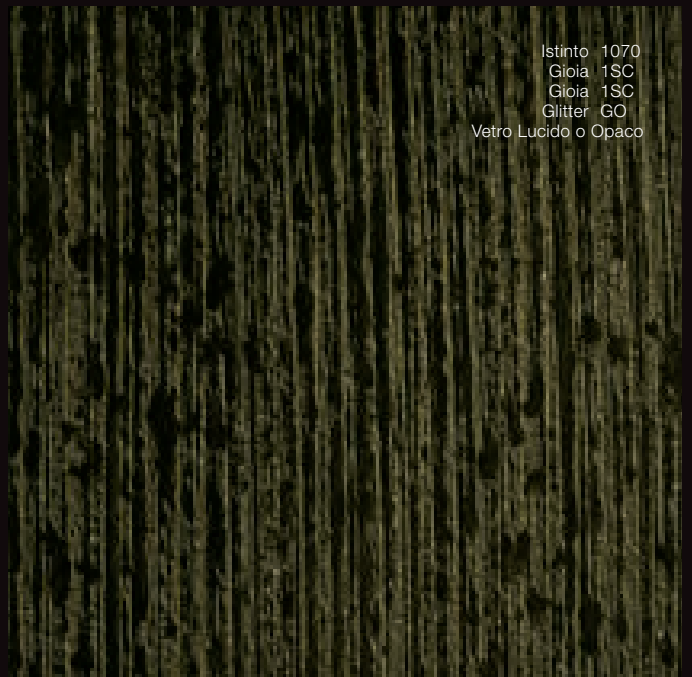
PIETRA ZEN

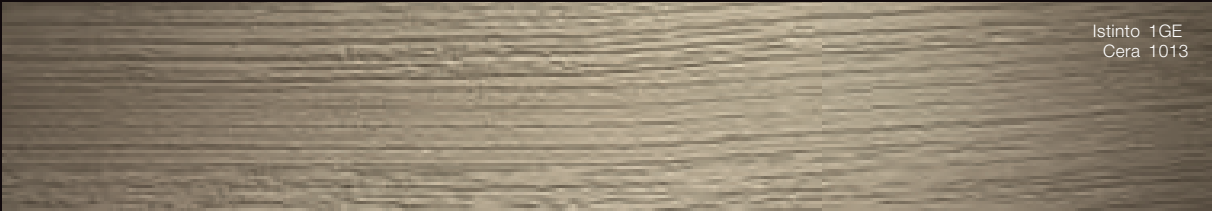
Istinto 2GD

Finiture: Cera del Vecchio

[www.giorgiograesan.it/video/17](http://www.giorgiograesan.it/video/17)



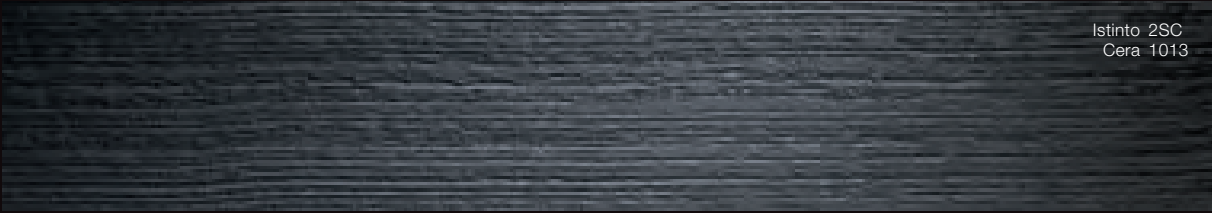




Istinto 1GE  
Cera 1013



Istinto 3GE  
Cera 1013



Istinto 2SC  
Cera 1013



Istinto 1GC  
Cera 1013



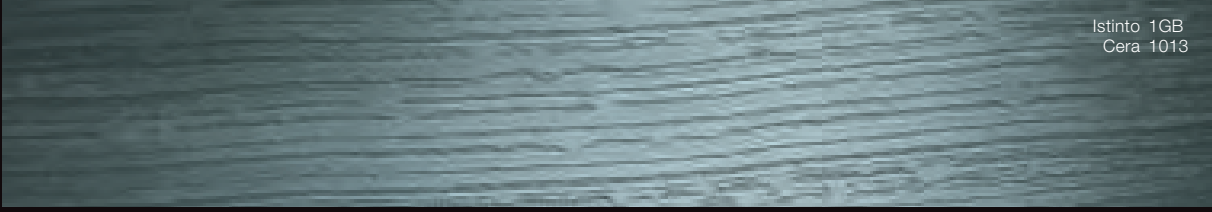
Istinto 3GC  
Cera 1013



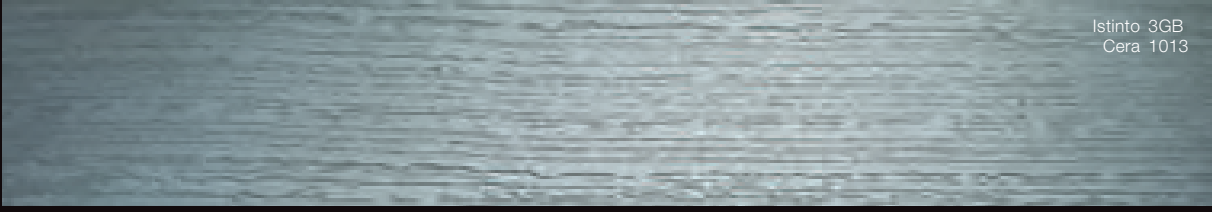
Istinto 2GD  
Cera 1013



Istinto 4GD  
Cera 1013



Istinto 1GB  
Cera 1013



Istinto 3GB  
Cera 1013

# PIETRA BAMBOO

---

**Un Muro con un Segno profondo e lineare che ricorda la crescita orgogliosa e disordinata del Bamboo. Può' essere disegnata in orizzontale o verticale per una diversa esperienza tattile e visiva.**

A Wall with a deep and linear Sign that reminds of the proud and chaotic growth of the Bamboo. It can be drawn horizontally or vertically, for a different tactile and visual experience.

Un mur au tracé profond et linéaire, qui rappelle la croissance nette et désordonnée du bambou. Le tracé peut être horizontal ou vertical, ce qui donne différents résultats au toucher et à la vue.

Eine Wand mit tiefem und linearen Zeichen, welches an das stolze und ungeordnete Wachstum von Bambus erinnert. Die Gestaltung kann horizontal oder vertikal erfolgen – für eine jeweils unterschiedliche haptische und visuelle Erfahrung.

Una muralla con una señal profunda y lineal que recuerda el crecimiento orgulloso y desordenado de los bambúes. Pude diseñarse horizontal o verticalmente para otorgar experiencias táctiles y visuales diferentes.

Ένας Τοίχος με ένα Σήμα βαθύ και γραμμικό που υπενθυμίζει την υπερήφανη και ανεξέλεγκτη ανάπτυξη του Μπαμπού. Μπορεί να ζωγραφιστεί οριζόντια ή κατακόρυφα για μια διαφορετική απτική και οπτική αίσθηση.

深刻和线条式的图案使我们联想到骄傲无序生长的竹子。水平或垂直涂刷会赋予不同的触觉和视觉体验。

# Pietra Bamboo





PIETRA BAMBOO

Istinto 1070

Gioia 4GF

Gioia 4GF

Finiture: Vetro Lucido o Opaco

[www.giorgiograesan.it/video/18](http://www.giorgiograesan.it/video/18)





PIETRA BAMBOO

Istinto 1070

Gioia 2000

Gioia 2GE

Gioia 2GE

Finiture: Vetro Lucido o Opaco

[www.giorgiograesan.it/video/18](http://www.giorgiograesan.it/video/18)



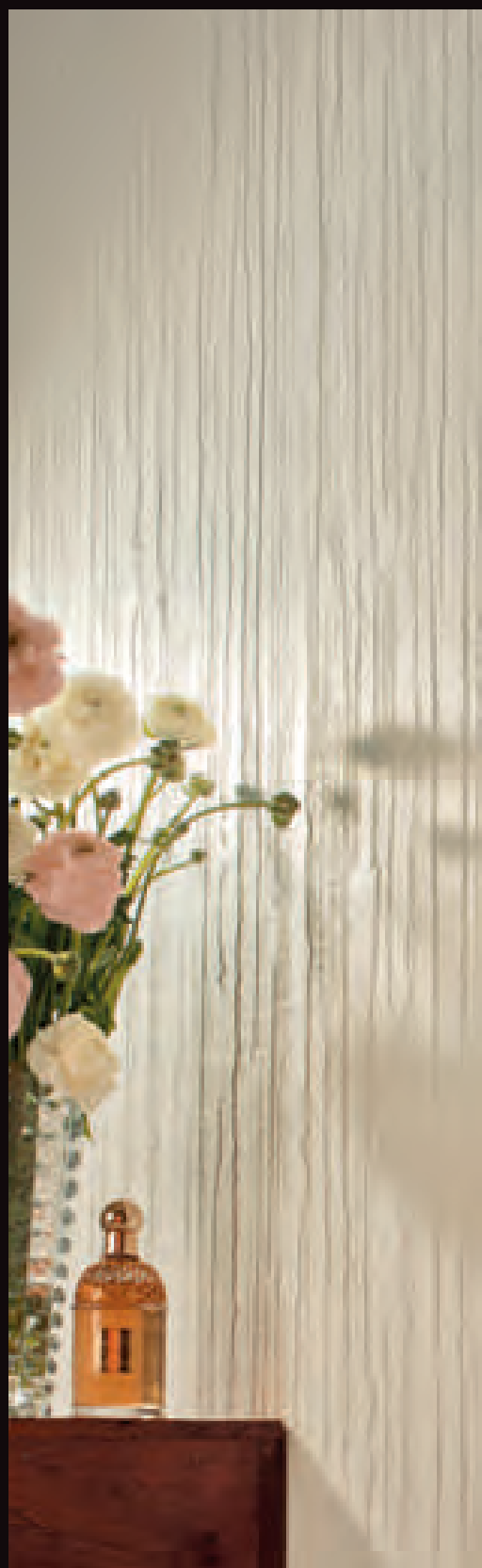


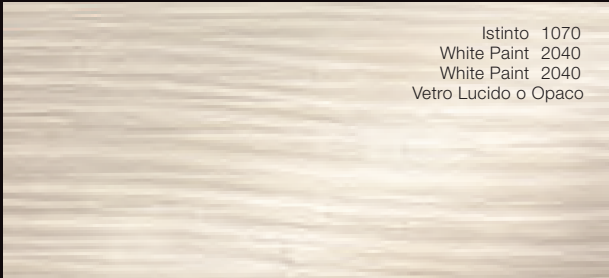
PIETRA BAMBOO

Istinto 1070

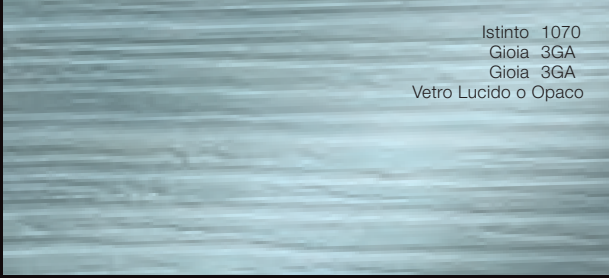
Finiture: Cera del Vecchio

[www.giorgiograesan.it/video/18](http://www.giorgiograesan.it/video/18)

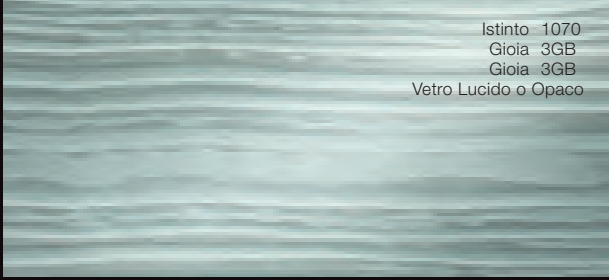




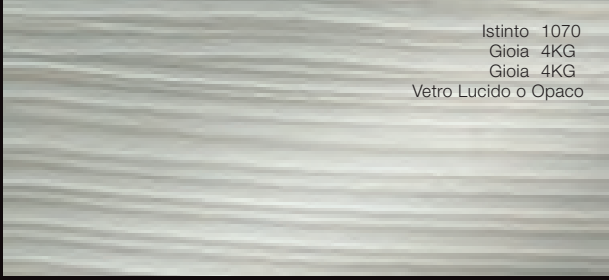
Istinto 1070  
 White Paint 2040  
 White Paint 2040  
 Vetro Lucido o Opaco



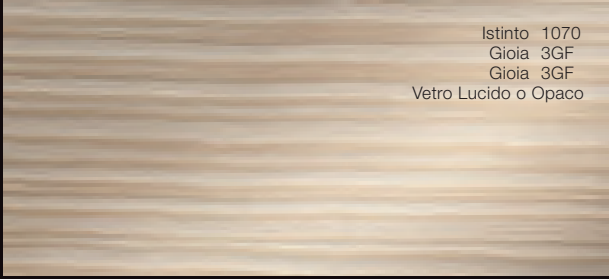
Istinto 1070  
 Gioia 3GA  
 Gioia 3GA  
 Vetro Lucido o Opaco



Istinto 1070  
 Gioia 3GB  
 Gioia 3GB  
 Vetro Lucido o Opaco



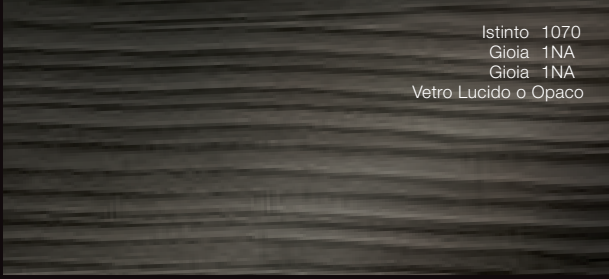
Istinto 1070  
 Gioia 4KG  
 Gioia 4KG  
 Vetro Lucido o Opaco



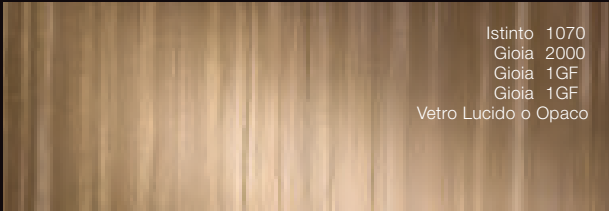
Istinto 1070  
 Gioia 3GF  
 Gioia 3GF  
 Vetro Lucido o Opaco



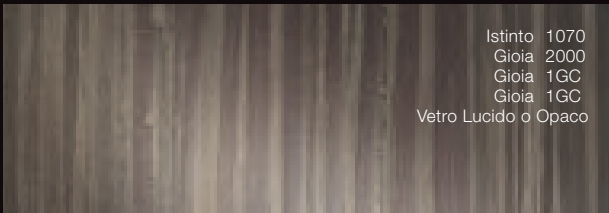
Istinto 1070  
 Gioia 3NB  
 Gioia 3NB  
 Vetro Lucido o Opaco



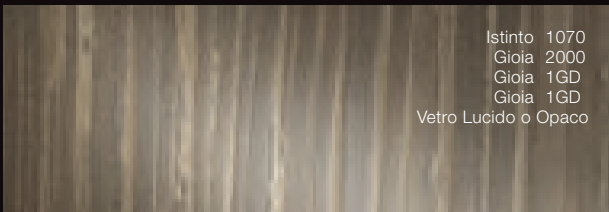
Istinto 1070  
 Gioia 1NA  
 Gioia 1NA  
 Vetro Lucido o Opaco



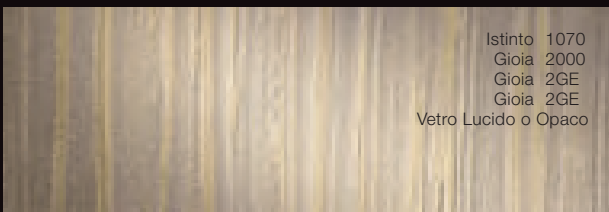
Istinto 1070  
 Gioia 2000  
 Gioia 1GF  
 Gioia 1GF  
 Vetro Lucido o Opaco



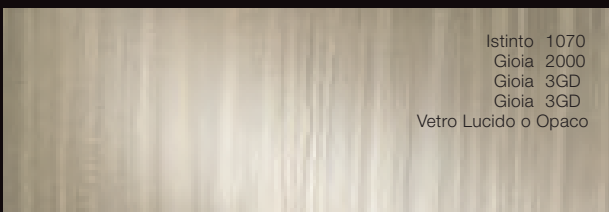
Istinto 1070  
 Gioia 2000  
 Gioia 1GC  
 Gioia 1GC  
 Vetro Lucido o Opaco



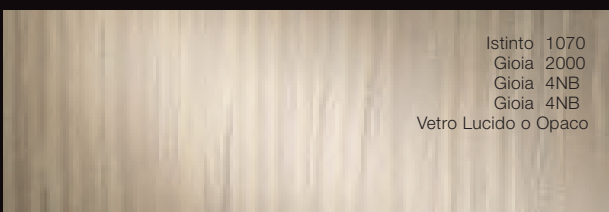
Istinto 1070  
 Gioia 2000  
 Gioia 1GD  
 Gioia 1GD  
 Vetro Lucido o Opaco



Istinto 1070  
 Gioia 2000  
 Gioia 2GE  
 Gioia 2GE  
 Vetro Lucido o Opaco



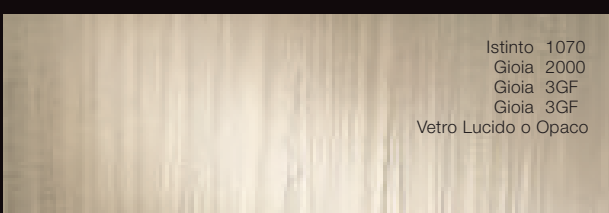
Istinto 1070  
 Gioia 2000  
 Gioia 3GD  
 Gioia 3GD  
 Vetro Lucido o Opaco



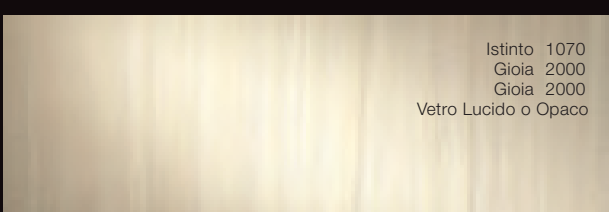
Istinto 1070  
 Gioia 2000  
 Gioia 4NB  
 Gioia 4NB  
 Vetro Lucido o Opaco



Istinto 1070  
 Gioia 2000  
 Gioia 3GG  
 Gioia 3GG  
 Vetro Lucido o Opaco



Istinto 1070  
 Gioia 2000  
 Gioia 3GF  
 Gioia 3GF  
 Vetro Lucido o Opaco



Istinto 1070  
 Gioia 2000  
 Gioia 2000  
 Vetro Lucido o Opaco



Istinto 2SC  
Cera 1013



Istinto 2GF  
Cera 1013



Istinto 3GC  
Cera 1013



Istinto 3GE  
Cera 1013

# CEMENTO NATURALE

---

**Una rappresentazione di un muro di Cemento ma completamente Naturale perché creata con Calci e Minerali. Completamente traspirante di natura può essere protetto con Cera del Vecchio, Vetro Opaco e Lucido.**

A representation of a Concrete wall, but completely Natural, because it is created with Limes and Minerals. Completely and naturally breathable, it can be protected with the Cera del Vecchio wax for polished and matt glass (Vetro Opaco e Lucido).

Une représentation de ciment complètement naturel, car il est fabriqué à base de calcium et de minéraux. Permettant naturellement la transpiration, ce mur peut être protégé avec Cera del Vecchio, Vetro Opaco et Lucido.

Die Präsentation einer Wand aus Zement – dabei jedoch vollkommen natürlich, da sie mit Kalkstein und Mineralien geschaffen wurde. Von Natur aus komplett atmungsaktiv kann sie mit den Produkten Cera del Vecchio, Vetro Opaco und Lucido pflegend geschützt werden.

Una representación de una muralla de Cemento pero completamente Natural porque ha sido creada con Cal y Minerales. Completamente porosa en su naturaleza, puede protegerse con "Cera del Vecchio", Vidrio, Opaca o Brillante.

Μια παρουσίαση ενός τοίχου από Σκυρόδεμα αλλά εντελώς Φυσικό διότι είναι φτιαγμένο με Δομικούς Υδράβεστους και Ορυκτά. Διατυπώνεται ο ισχυρισμός ότι «αναπνέει» εντελώς φυσικά, μπορεί να προστατευτεί με Cera del Vecchio, Vetro Opaco ή Lucido.

完全天然的混凝土墙壁采用 Calci 和 Minerali 涂刷而成。可采用 Cera del Vecchio, Vetro Opaco 以及 Lucido 以保持其充分的透气性。



An aerial photograph of a construction site showing a grid of concrete slabs. The slabs are arranged in a rectangular pattern, with some slabs appearing more finished than others. The overall tone is monochromatic, with various shades of gray and brown. The text 'Cemento Naturale' is overlaid on the right side of the image.

# Cemento Naturale



CEMENTO NATURALE

Istinto 3KG

Finiture: Cera del Vecchio

[www.giorgiograesan.it/video/21](http://www.giorgiograesan.it/video/21)





CEMENTO NATURALE

Istinto 3NB

Finiture: Cera del Vecchio

[www.giorgiograesan.it/video/21](http://www.giorgiograesan.it/video/21)





CEMENTO NATURALE

Istinto 1070

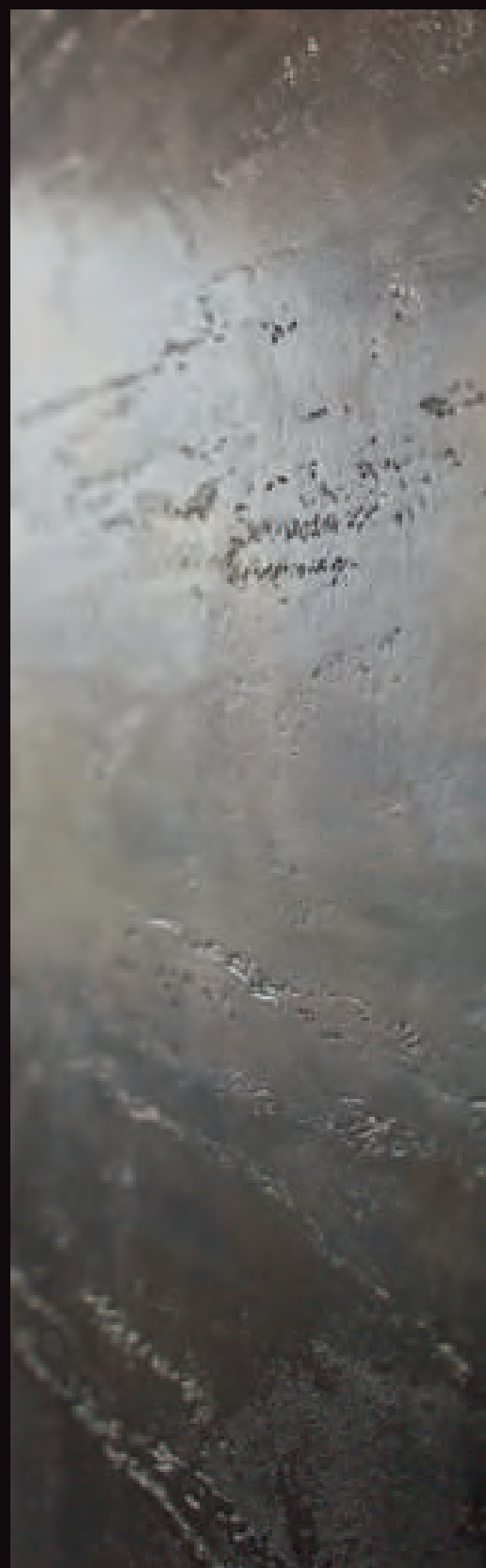
Gioia 3NA

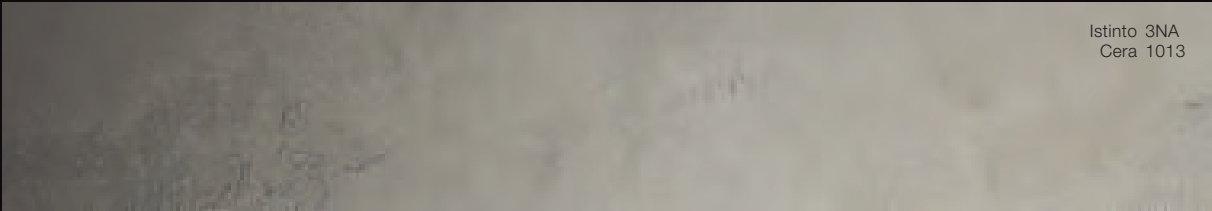
Gioia 3NA

Gioia 2SC

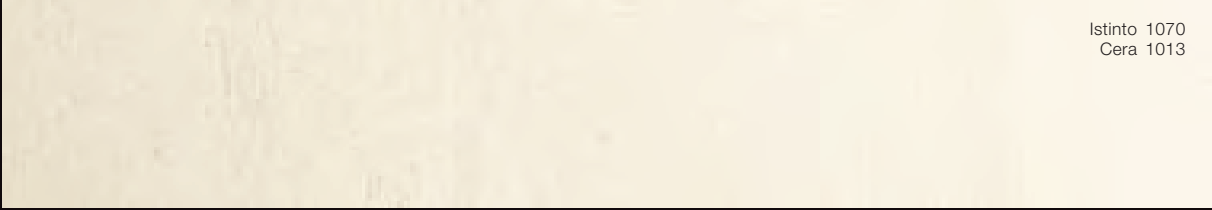
Finiture: Vetro Lucido o Opaco

[www.giorgiograesan.it/video/21](http://www.giorgiograesan.it/video/21)

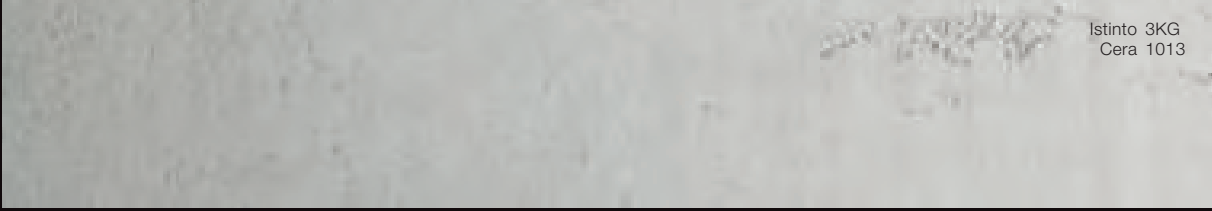




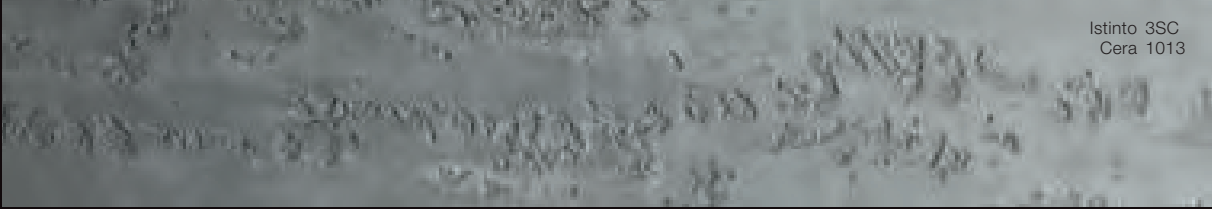
Istinto 3NA  
Cera 1013



Istinto 1070  
Cera 1013



Istinto 3KG  
Cera 1013



Istinto 3SC  
Cera 1013



Istinto 1SC  
Cera 1013



Istinto 4NB  
Cera 1013



Istinto 3NB  
Cera 1013

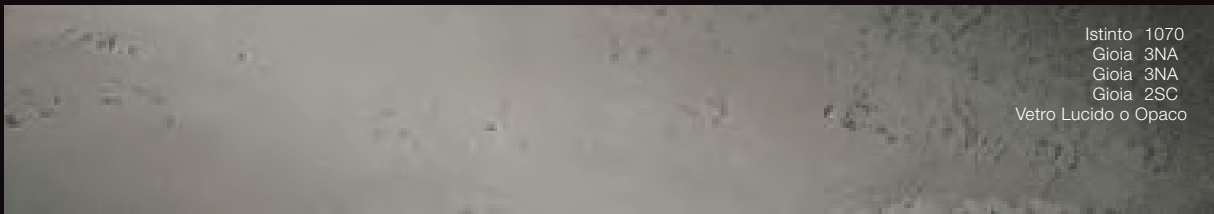


Istinto 3KA  
Cera 1013



Istinto 1KA  
Cera 1013





Istinto 1070  
Gioia 3NA  
Gioia 3NA  
Gioia 2SC  
Vetro Lucido o Opaco



Istinto 1070  
Gioia 2000  
Gioia 2000  
Vetro Lucido o Opaco



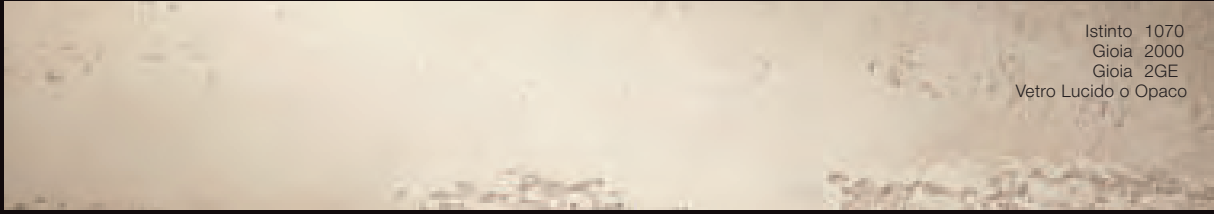
Istinto 1070  
Gioia 2000  
Gioia 3GF  
Vetro Lucido o Opaco



Istinto 1070  
Gioia 2000  
Gioia 2GG  
Vetro Lucido o Opaco



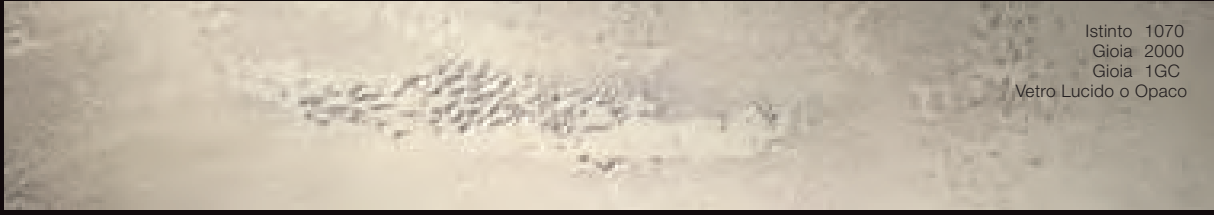
Istinto 1070  
Gioia 2000  
Gioia 1GG  
Vetro Lucido o Opaco



Istinto 1070  
Gioia 2000  
Gioia 2GE  
Vetro Lucido o Opaco



Istinto 1070  
Gioia 2000  
Gioia 1GF  
Vetro Lucido o Opaco



Istinto 1070  
Gioia 2000  
Gioia 1GC  
Vetro Lucido o Opaco



Istinto 1070  
Gioia 2000  
Gioia 2NB  
Vetro Lucido o Opaco

# PIETRA INTAGLIATA

---

**Una Pietra lavorata con speciali frese che operano in diverse direzioni e reagisce quindi con diversi riflessi pur essendo dello stesso colore. Può essere colorato con ogni tinta della nostra tabella a fine campionario.**

A Stone that is engraved with special milling machines that cut in various directions and thus reacts with different reflexes of the same color. It can be dyed with every color of our palette that you find at the end of the catalog.

Une pierre travaillée avec des spatules dentées qui vont dans différentes directions, ce qui crée donc des reflets divers, malgré la teinte unie. Le mur peut être coloré avec toutes les teintes de notre tableau présent à la fin du carnet d'échantillons.

Ein Stein, der mit Spezierschneidern bearbeitet wurde, welche in verschiedene Richtungen hin arbeiten, wodurch dieser mit unterschiedlichen Reflexionen reagiert, trotz des nur einen bestehenden Farbtons. Der Stein kann mit jeder Farbe aus unserer Tabelle als Anschauungsmuster eingefärbt werden.

Una Piedra trabajada con fresas especiales que operan en diversas direcciones y por ello devuelve diferentes reflejos aún siendo de un solo color. Puede colorearse con cualquier tinta de nuestra tabla del muestrario.

Μια Πέτρα επεξεργασμένη με ειδικά μηχανήματα σημειακής κοπής που δουλεύουν σε διαφορετικές κατευθύνσεις και αντιδρά με διαφορετικές αντανάκλασεις μολονότι έχει το ίδιο χρώμα. Μπορεί να χρωματιστεί με οποιοδήποτε χρώμα του δικού μας πίνακα για δειγματοληψία.

这款石材采用特殊铣刀在不同方向进行打磨，因此单一的石材颜色会反射出不同的颜色。可选用本公司样品颜色进行着色。

# Pietra Intagliata



PIETRA INTAGLIATA

Istinto 1070

Gioia 3GA

Gioia 3GA

Finiture: Vetro Lucido o Opaco

[www.giorgiograesan.it/video/13](http://www.giorgiograesan.it/video/13)





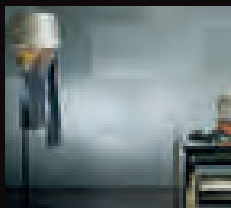
PIETRA INTAGLIATA

Istinto 2AM  
Oro Ricco 2AM

Finiture: Vetro Lucido o Opaco

[www.giorgiograesan.it/video/13](http://www.giorgiograesan.it/video/13)





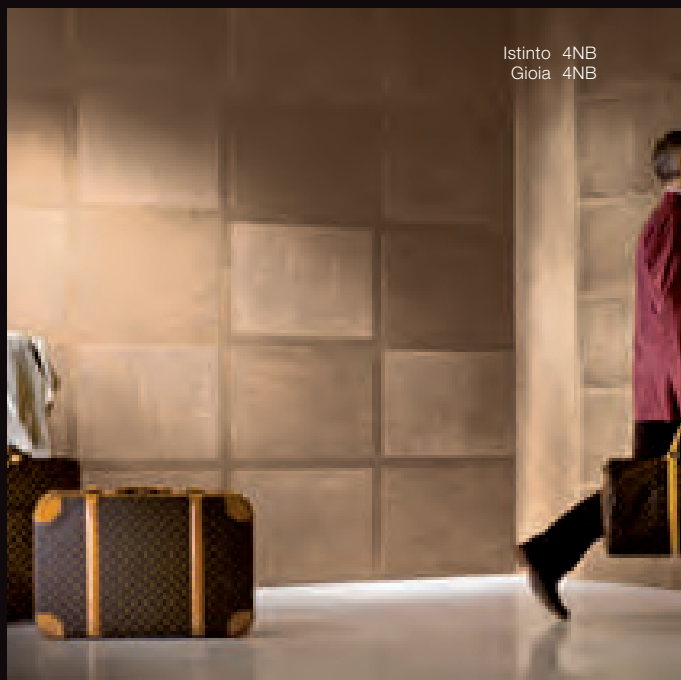
Pag. 84







Pag. 86



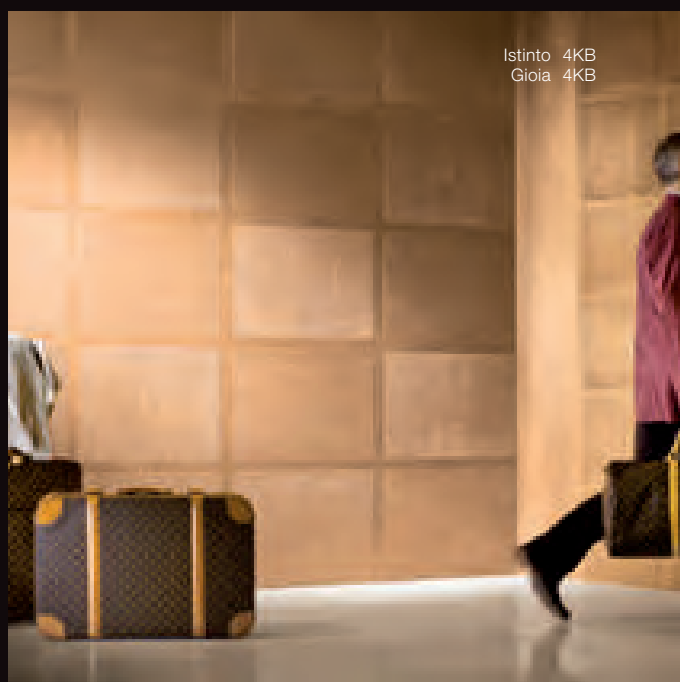
Istinto 4NB  
Gioia 4NB



Istinto 4SC  
Gioia 4SC



Istinto 1070  
Gioia 2000



Istinto 4KB  
Gioia 4KB

# MINIMAL

---

L'abbinamento perfetto con Segui il Tuo **ISTINTO**.

Segui il Tuo **ISTINTO** permette una Estetica molto appariscente. Una parete, un camino, angolo cottura etc. catturano l'occhio di chi osserva e può essere eccessivo utilizzare Pietra Spaccata, Pietra Zen, Pietra Contemporanea etc per tutto un locale. Anche una zona limitata come nella foto qui a fianco può essere sufficiente e bellissima per caratterizzare un ambiente.

Diventa quindi importante abbinare le pareti limitrofe con colori omogenei e una Estetica meno appariscente. A questo scopo abbiamo un prodotto specifico, **MINIMAL**, che con la sua apparenza leggermente satinata ma opaca e il suo aspetto sobrio, si abbina perfettamente alla eccentricità e coinvolgente esuberanza di **ISTINTO**.

I Colori di **MINIMAL** si abbinano perfettamente alle tinte di Istinto perché sono parte della stessa palette e deriva dalla nostra ricerca negli ultimi 20 anni. La gamma colori si estende per 168 variazioni riportate nella tabella della pagina successiva e può' essere di grande aiuto e direzione per la difficile scelta delle tinte per le pareti.

Istinto 1070  
Gioia 2000  
Gioia 2GF  
Gioia 2GF

Minimal 3GF  
Minimal 3GF



# Suggerimenti di colore per



# MINIMAL e Segui il tuo **ISTINTO**

NA

NB

NS

NL

NR

NO

NY



ZA

ZB

ZC

ZD

ZE

ZF

ZG



AR

AA

AL

AM

AF

AV

AZ



Colori fotografici ed indicativi - Photographique and suggested colours - Colours photographiques et indicatives - Fotografische und hinweisende Farben - Colores fotográficos y sugerencias - Φωτογραφικά και προτεινόμενα χρώματα - 仿真图像色卡

# LO STUCCO PER PITTORI **CREATIVI**

---

**L'Essenza Naturale di Segui il Tuo ISTINTO** assicura che ogni parete sia una **Creazione Unica e un'Opera d'Arte.**

The Natural Essence of Segui il Tuo ISTINTO ensures that every wall is a Unique Creation and therefore a Work of Art.

Avec l'essence naturelle de Segui il Tuo ISTINTO chaque paroi sera une Création Unique et donc une Œuvre d'Art.

Die natürliche Eigenschaft von Segui il Tuo ISTINTO macht aus jeder Wand ein Einzelstück, also ein Kunstwerk.

La Esencia Natural de Segui il Tuo ISTINTO, asegura que cada pared sea una Creación Única y, por lo tanto, una Obra de Arte.

Η Φυσικότητα του Segui il Tuo ISTINTO συντελεί ώστε ο κάθε τοίχος να είναι μια Μοναδική Δημιουργία και συνεπώς ένα Έργο Τέχνης.

岩采坭的精髓在于：每一面完成墙面都是独一无二的创作，是艺术的创作。



GIORGIO GRAESAN  
and Friends